

Draft Environmental Impact Statement

Campo Wind Project

June 19, 2019

6:00 PM



LEAD AGENCY: U.S. Department of the Interior, Bureau of Indian Affairs

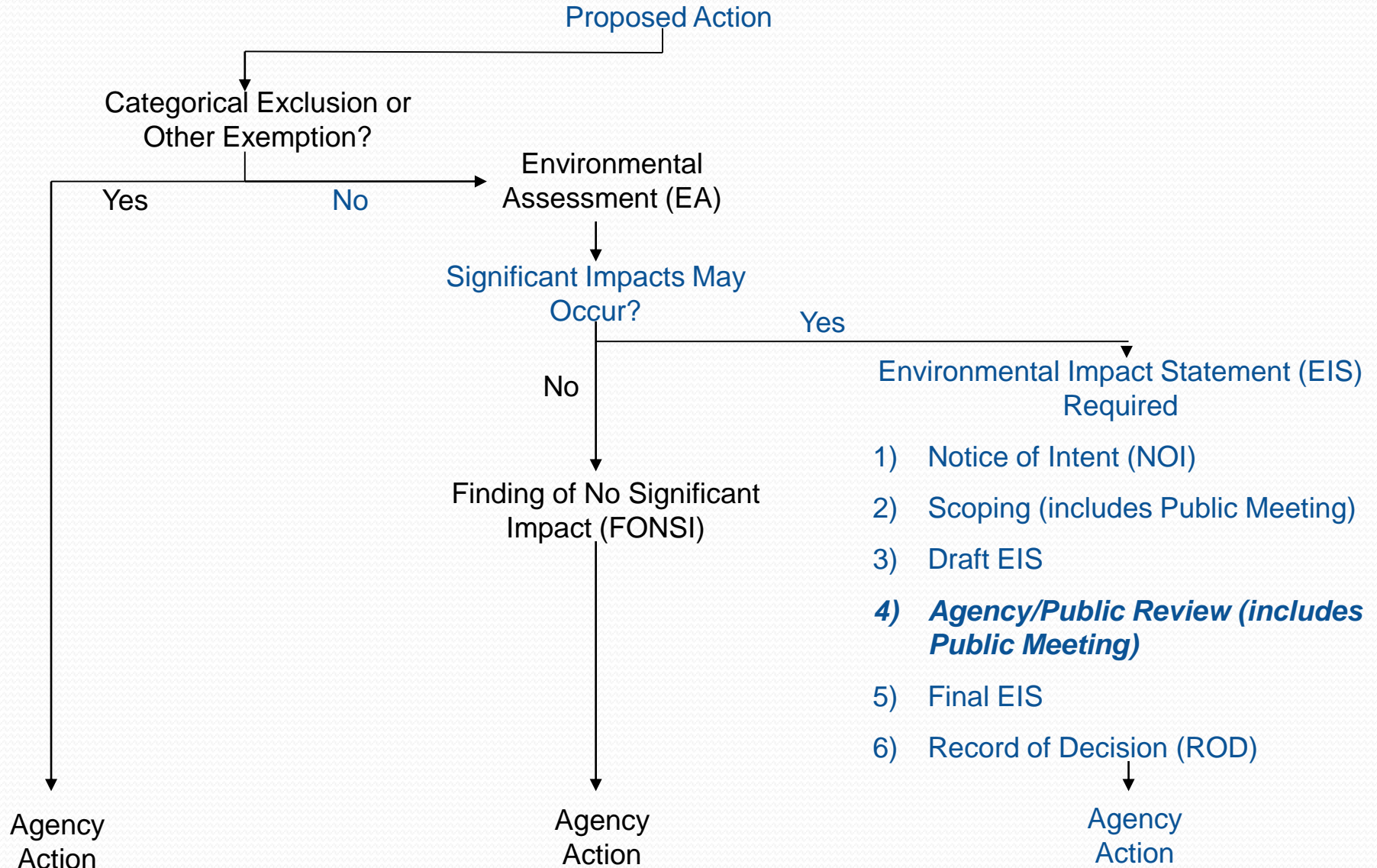
Agenda

- Welcome & Introductions
- What is NEPA?
- Project Overview
- Understanding the Draft EIS
- Public Comments

WHEN IS NEPA REVIEW REQUIRED?

- National Environmental Policy Act (NEPA) review is required prior to taking a major federal action
- In this case, the proposed major federal action requested by the Campo Band of Diegueno Mission Indians (Campo Tribe) is approval of a lease of approximately 2,200 acres with Terra-Gen Development Company, LLC for the purpose of developing, constructing, operating, maintaining and ultimately decommissioning a renewable wind energy project

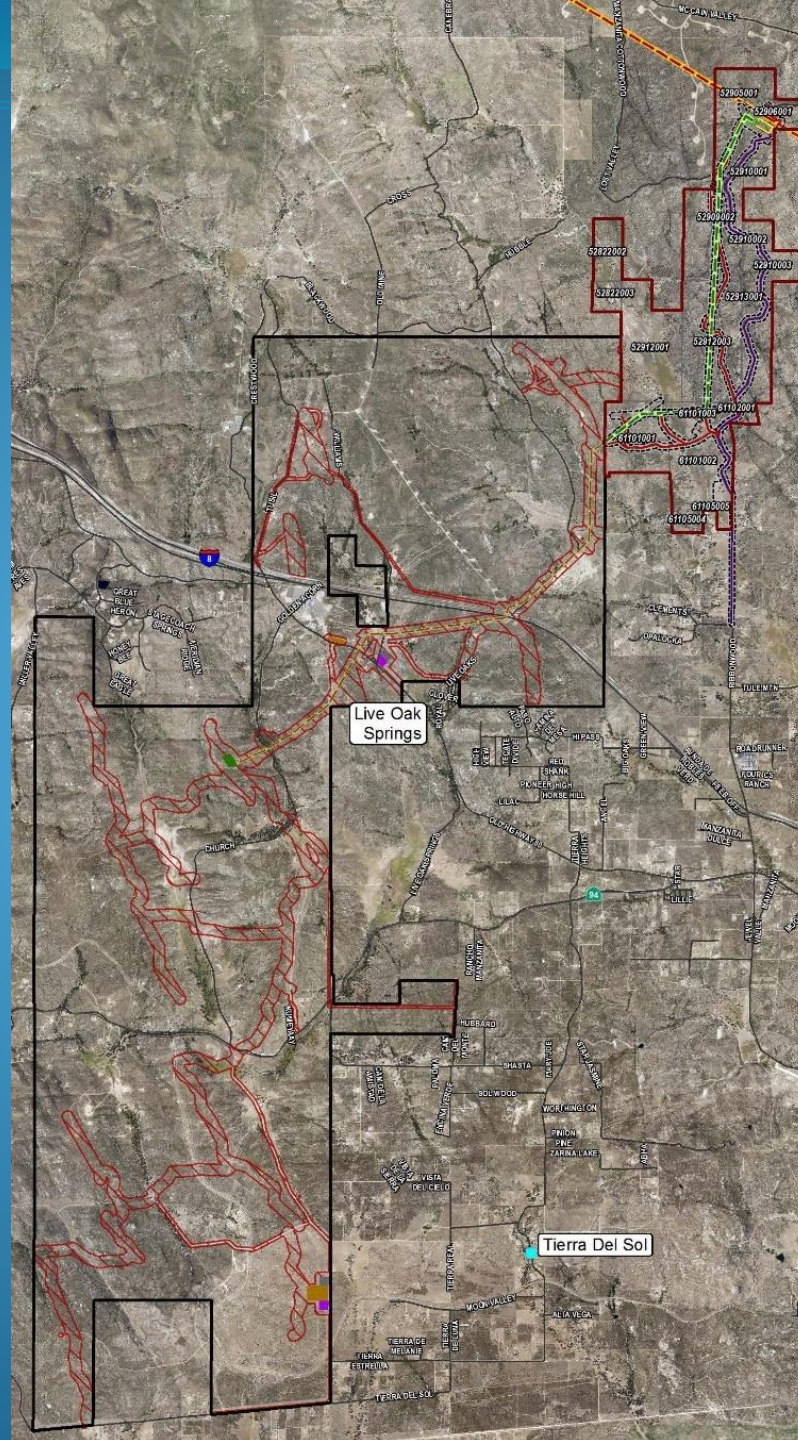
NEPA PROCESS OVERVIEW



PROPOSED ACTION

- Leased lands on Campo Reservation, ~2,200 acres corridor, and would disturb ~800 acres on Campo Reservation
- Would include associate development on private lands parcels of ~2,000 acres, ~500 corridor, and would disturb ~200 acres of private lands
- 76 possible turbine locations evaluated
- Only 60 turbines can be installed per the lease
- 1 O&M Building and 1 Temporary batch plant are proposed, 2 possible locations for those are presented

Project Overview



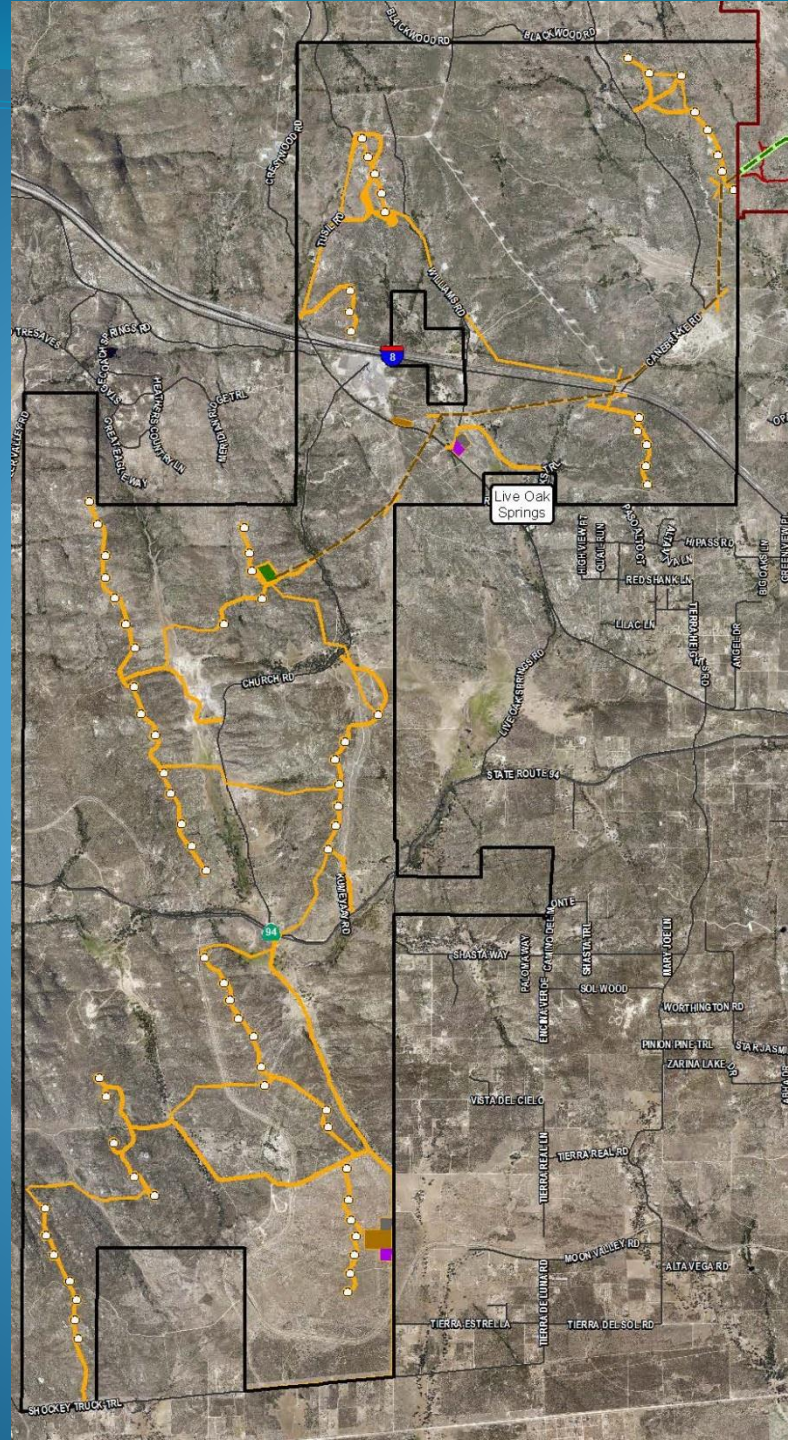
Boulder Brush

- Boulder Brush Boundary
- Boulder Brush Corridor
- Boulder Brush Gen-tie
- Paved Road
- High Voltage Substation
- Switchyard
- Access Roads

Campo Wind

- Campo Wind Boundary
- Campo Wind Corridor
- Campo Wind Gen-tie
- Batch Plant
- Laydown Yard
- O&M Building
- Collector Substation

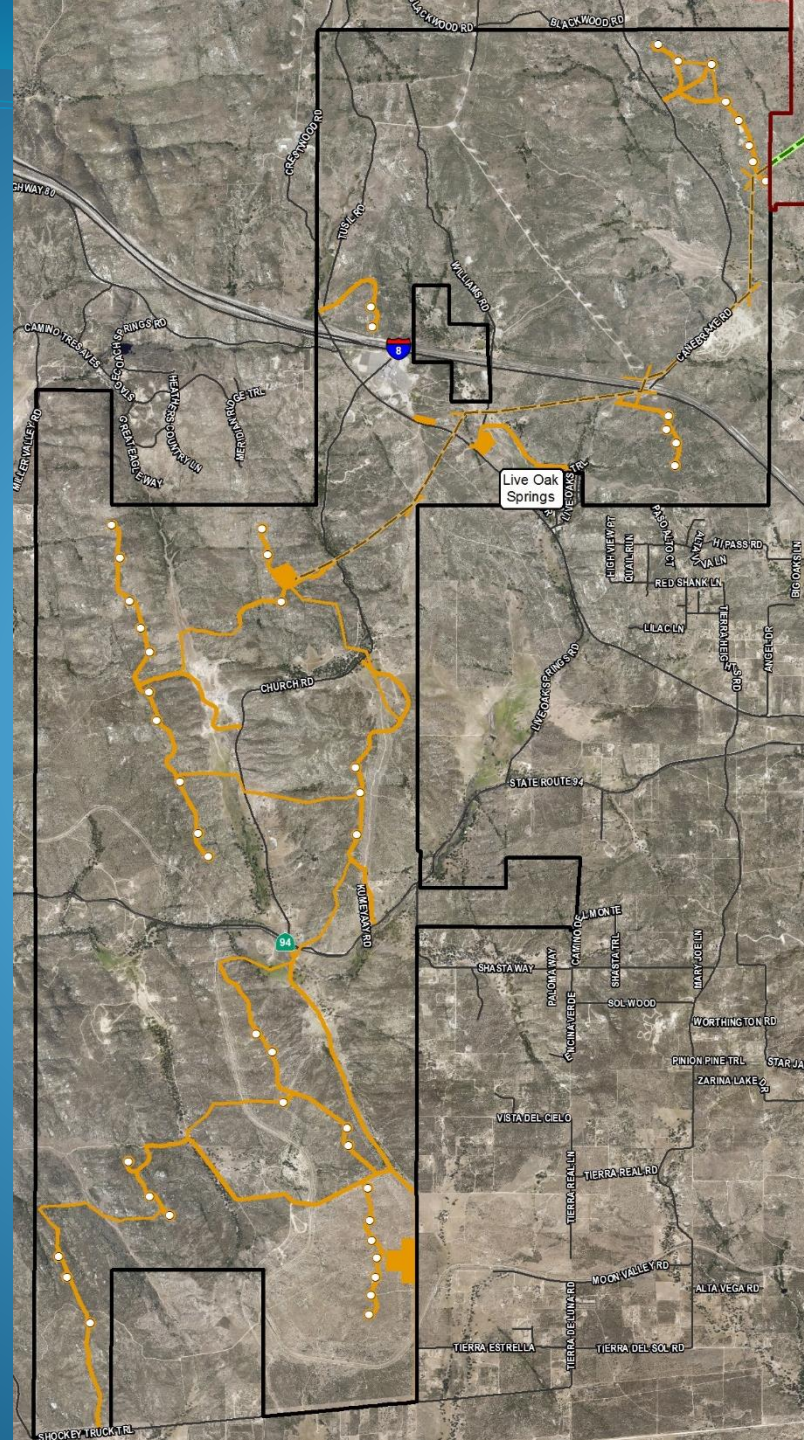
Preferred Alternative ~252 MW



Campo Wind

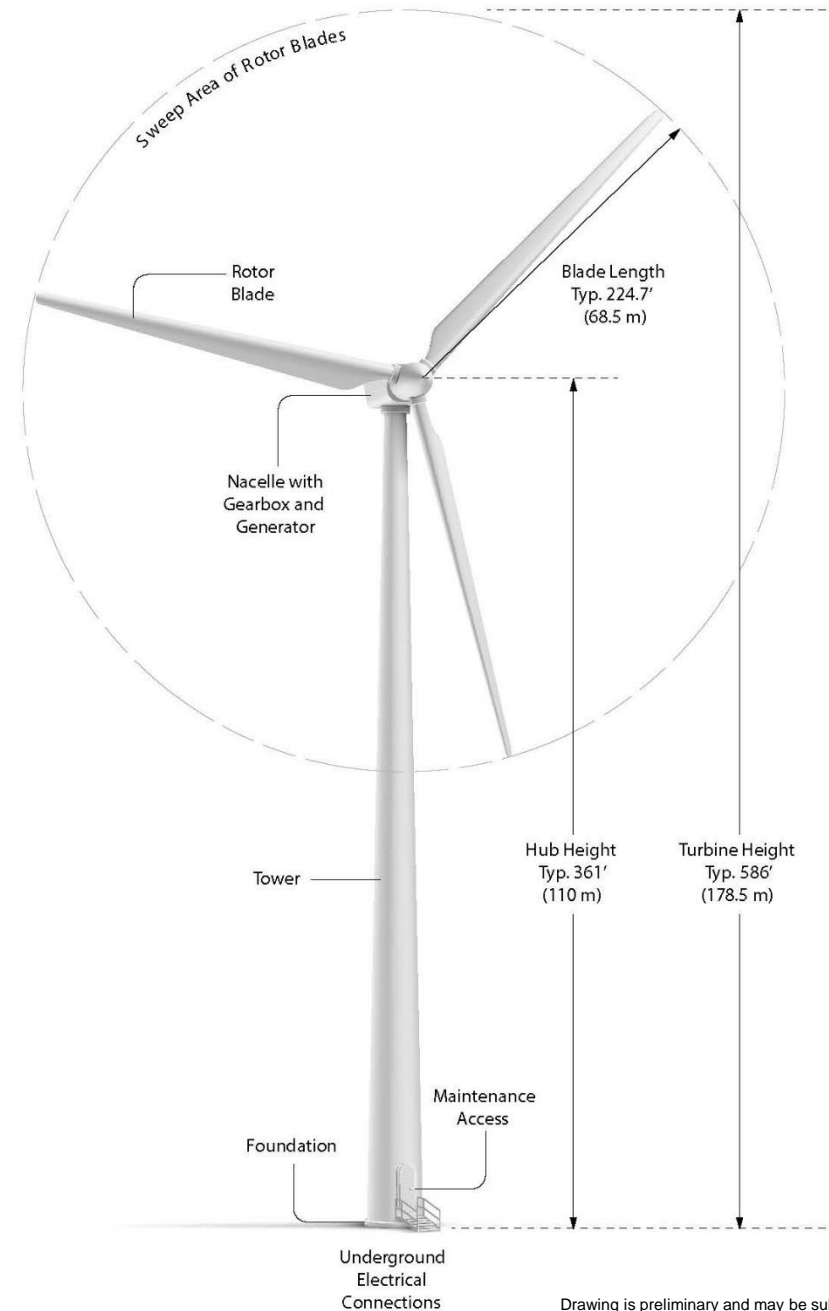
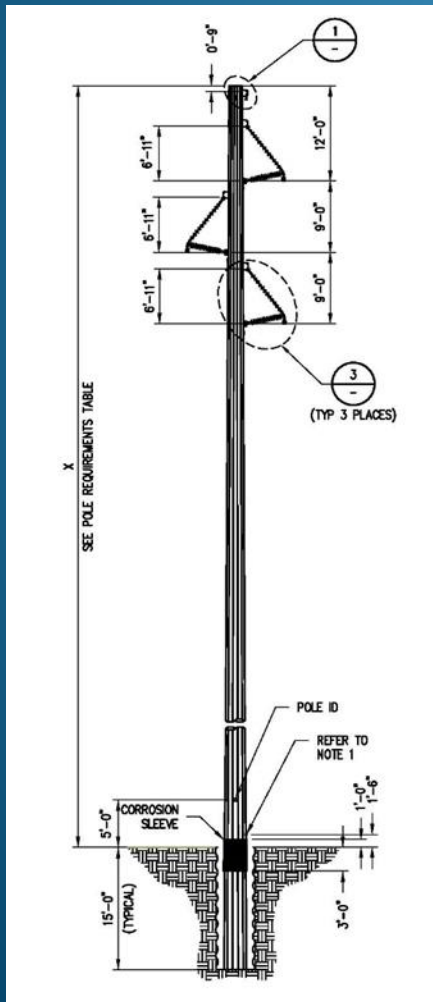
- Campo Wind Boundary
- Possible Turbine Locations
- Campo Wind Gen-tie
- Campo Disturbance Limits
- Batch Plant
- Laydown Yard
- O&M Building
- Collector Substation

Reduced Intensity Alternative ~202 MW



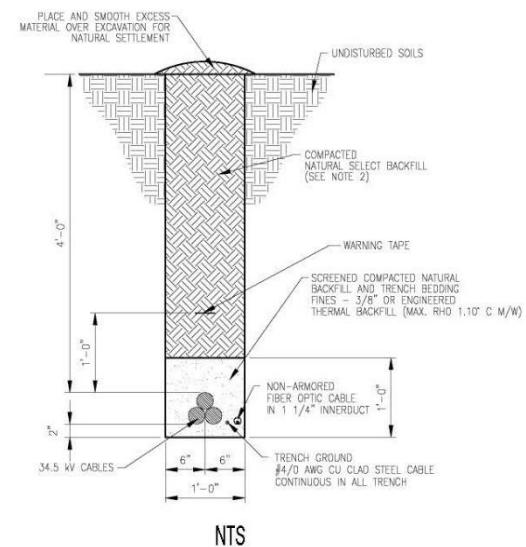
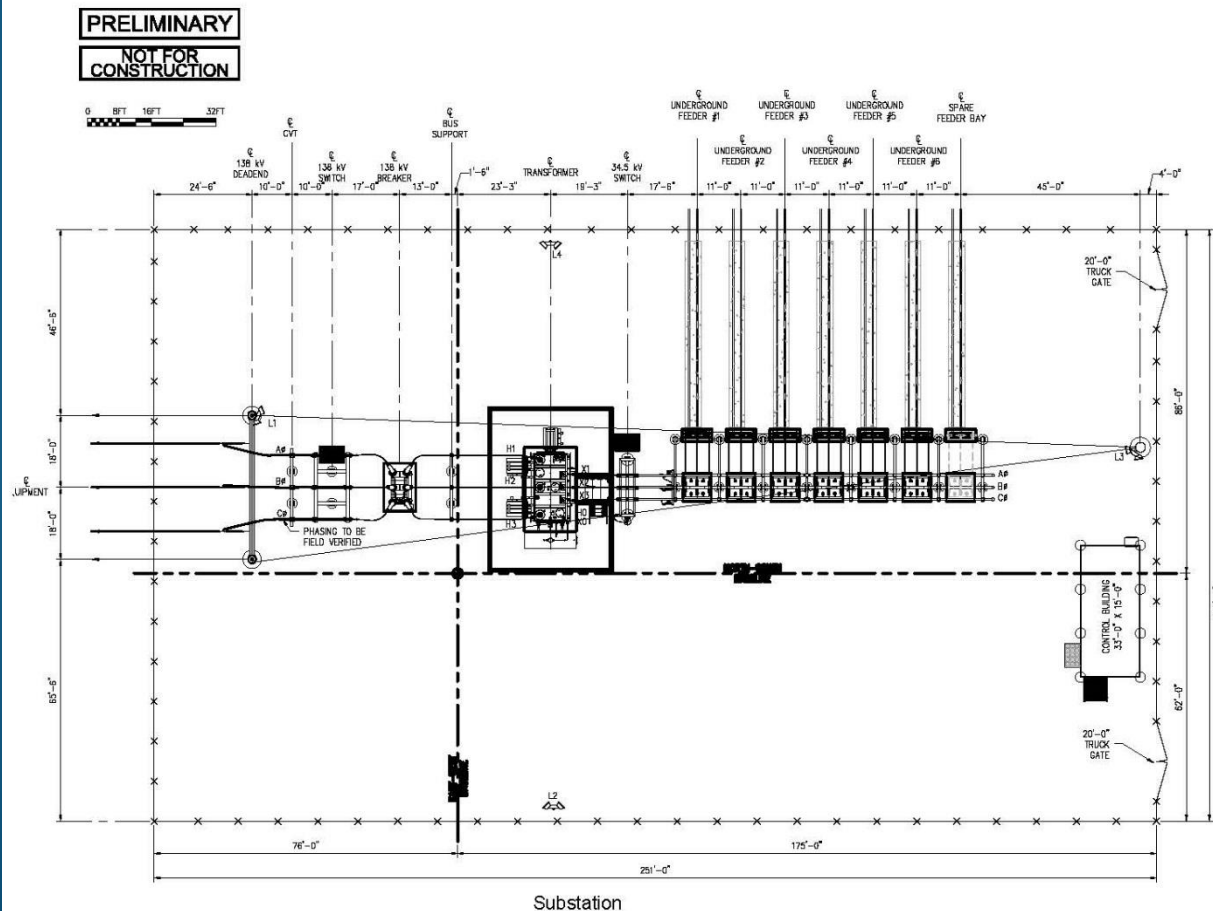
- Campo Wind**
- Campo Wind Boundary
 - Campo Wind Gen-tie
 - Possible Turbine Locations
 - Disturbance Limits
 - Batch Plant
 - Laydown Yard
 - O&M Building
 - Collector Substation

Wind Turbines & Transmission Poles



Drawing is preliminary and may be subject to change






Collector Substation



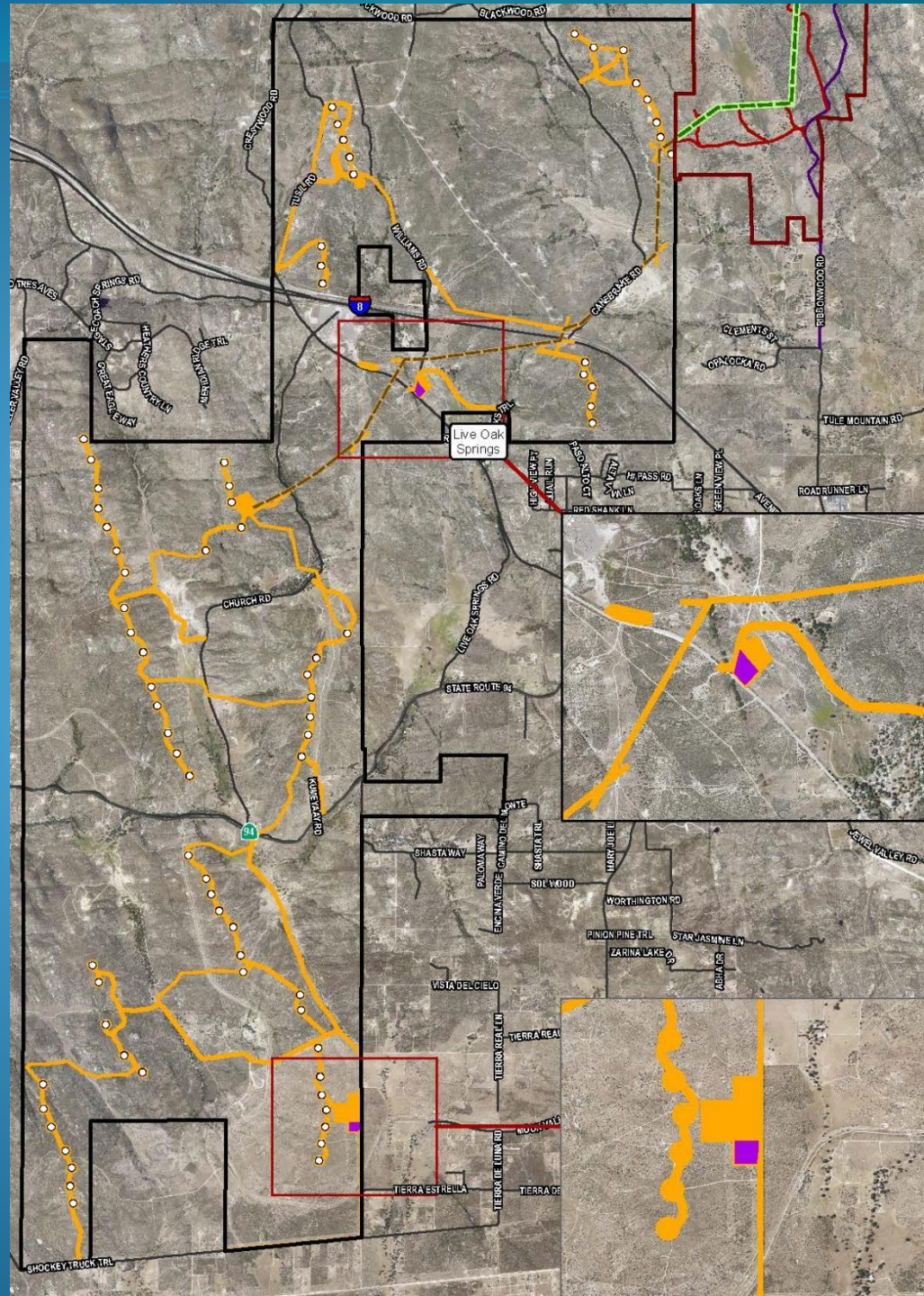
Typical Electrical Collection and Communications System

O&M Building

Campo Wind






-  Campo Wind Boundary
-  Possible Turbine Locations
-  Campo Wind Gen-tie
-  Campo Disturbance Limits
-  O&M Building

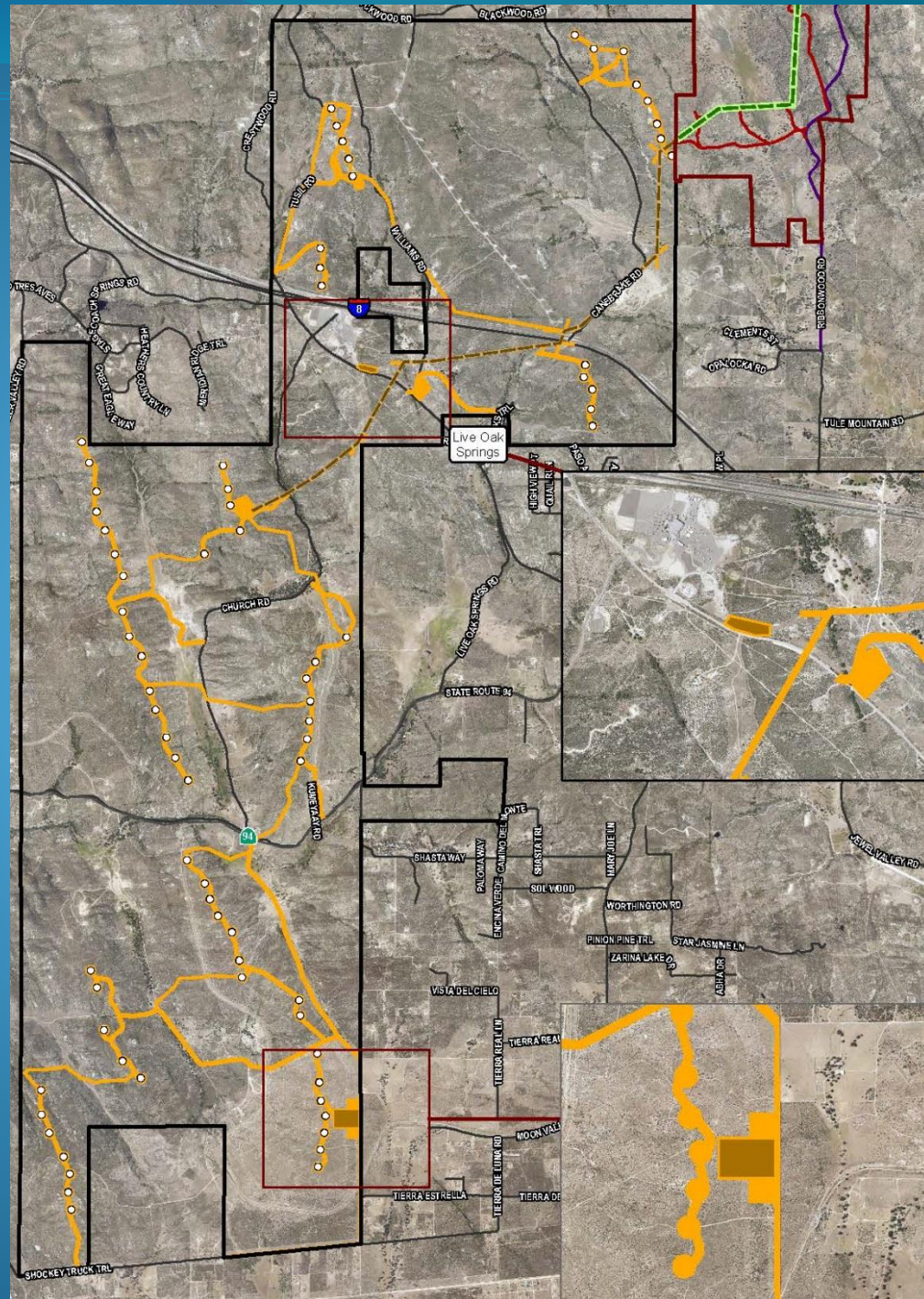
Map is preliminary and may be subject to change



Staging & Laydown Areas

Campo Wind

-  Campo Wind Boundary
-  Possible Turbine Locations
-  Campo Wind Gen-tie
-  Campo Disturbance Limits
-  Laydown Yard



Map is preliminary and may be subject to change

EIS PROCESS

- Notice of Intent (NOI) published in the federal register on **11/21/2018**
- Scoping period: **11/21/2018 - 12/21/2018** [BIA has also included comments received during the federal government shutdown, which ended **1/25/2019**]
- Notice of Availability (NOA) published in the federal register on **5/24/2019**, beginning the 45-day public review and comment period
- The NOI, NOA, Draft EIS are posted online at:
<http://www.campowind.com>

UNDERSTANDING THE DRAFT EIS

Draft EIS:

1. Introduction
2. Project Description and Alternatives
3. Affected Environment and Areas Not Further Discussed
4. Environmental Consequences (Effects)
5. Other NEPA Considerations

UNDERSTANDING THE DRAFT EIS

Appendices

A	Scoping Report	I	Cultural Resources Report
B	Project Description Details	J	Traffic Impact Analysis
C	Regulatory Settings	K	Acoustical Analysis Report
D	Environmental Resources Section Tables and Graphs	L	Visual Impact Assessment
E	EIS Figures	M	Preliminary Environmental Site Assessment
F	Groundwater Resource Evaluation	N	Cumulative Scenario
G	Air Quality and Greenhouse Gas Emissions Analysis Technical Report	O	References Cited in the EIS
H	Biological Technical Report	P	Mitigation Measures
		Q	Consultation and Coordination
		R	List of Preparers



ISSUES ANALYZED IN THE DRAFT EIS

- Land Resources
- Water Resources
- Air Quality
- Greenhouse Gas Emissions and Climate Change
- Biological Resources
- Cultural Resources
- Socioeconomics
- Resource Use Patterns
- Traffic and Transportation
- Noise
- Visual Resources
- Public Health and Environmental Safety
- Other Issues
- Cumulative Scenario and Impacts

EIS PROCESS – Public Review

- The 45-day public review and comment period ends **July 8, 2019**
- The public comment period, including this meeting, provides the public with an opportunity to comment on the contents and adequacy of the Draft EIS
- All substantive comments, whether written or spoken at this meeting, will be responded to by the BIA as part of the Final EIS

EIS PROCESS – Draft EIS

- The BIA prepared the Draft EIS analyzing the environmental impacts of the proposed action and alternatives:
- Preferred Project ~252 MW 60 Turbines
- Reduced Intensity Alternative ~202 MW 48 Turbines
- No Project

EIS PROCESS – Final EIS and ROD

- After the public review and comment period on the Draft EIS has closed, the BIA will prepare a Final EIS
- The Final EIS will include responses to all substantive comments received on the Draft EIS
- When completed, the Final EIS will be made available to the public for review
- At least 30 days after the publication of the Final EIS, the BIA will issue a Record of Decision (ROD) that includes its decision on whether or not to approve the proposed action
- The ROD marks the end of the NEPA process

BIA CONTACT INFORMATION

You may mail, hand carry, or fax written comments to:

Ms. Amy Dutschke, Regional Director

Bureau of Indian Affairs, Pacific Regional Office

2800 Cottage Way

Sacramento, CA 95825

For further information contact:

Dan Hall, Bureau of Indian Affairs

Phone – (916) 978-6041

Also Visit: <http://www.campowind.com>

Public Comments Process

- Hand your comment card to facilitator
- One speaker at a time
- 2-3 minutes per speaker (depending on time)

Public Comments

Comments due **JULY 8, 2019**
to:

Ms. Amy Dutschke
Regional Director
Bureau of Indian Affairs
Pacific Regional Office
2800 Cottage Way
Sacramento, CA 95825

For further info contact:

Dan Hall
Bureau of Indian Affairs
Phone – (916) 978-6041
Harold.hall@bia.gov

Also Visit:
<http://www.campowind.com>

